

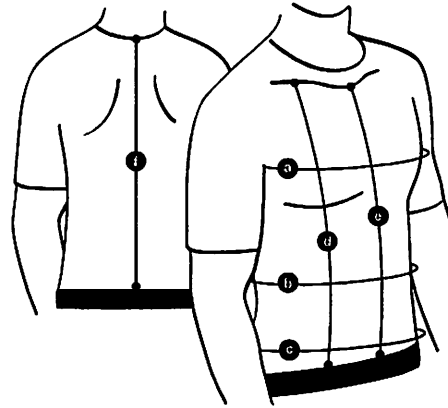
MALE - SIZING FORM



1. ALWAYS TAKE MEASUREMENTS WITH A PARTNER. NEVER MEASURE YOURSELF.
2. WEAR T-SHIRT AND DUTY GEAR WHEN BEING MEASURED.
3. USE VINYL OR CLOTH MEASURING TAPE.
4. READ ALL INSTRUCTIONS CAREFULLY AND COMPLETE ALL REQUESTED INFORMATION.

HEIGHT: _____ ft. _____ ins. WEIGHT: _____ lbs. PANTS INSEAM: _____ ins.

- a **CHEST**
(MEASURE AROUND CHEST AND UNDER ARMS.) _____ ins.
- b **MID-ABDOMEN**
(EXHALE AND STAND RELAXED. MEASURE ABDOMEN AT THE WIDEST PORTION OF YOUR MID-SECTION.) _____ ins.
- c **WAIST**
(MEASURE AROUND WAIST JUST ABOVE DUTY BELT.) _____ ins.
- d **CLAVICLE TO WAIST**
(MEASURE TOP OF CLAVICLE TO TOP EDGE OF DUTY BELT.) _____ ins.
- e **STERNUM TO WAIST**
(EXHALE AND STAND RELAXED. MEASURE FROM TOP AND CENTER OF STERNUM TO THE TOP EDGE OF DUTY BELT.)
STANDING _____ ins.
SITTING _____ ins.
- f **BACK**
(MEASURE FROM TOP EDGE OF T-SHIRT COLLAR TO TOP EDGE OF DUTY BELT.)
STANDING _____ ins.



PANEL CONFIGURATION

SIZES: (CIRCLE PANEL SIZE) NOTE: Front panel must be as wide or wider than back panel to allow for wrap-around coverage.
FRONT PANEL WIDTHS: 12 14 17 20 22 25 28 30 **FRONT PANEL LENGTHS:** 12 13 14 15 16 17 18 19 20 Other _____
BACK PANEL WIDTHS: 12 14 17 20 22 25 28 30 **BACK PANEL LENGTHS:** 12 13 14 15 16 17 18 19 20 Other _____

VEST MODEL HALO (LIGHT) VORTEX (LIGHTER) RAZOR (LIGHTEST)
THREAT LEVEL II IIIA
FRONT INSERT "ARA-SHOCK" SEMI-RIGID PLATE "SAP" SOFT PAC
COLOR BLACK WHITE LIGHT BLUE TAN DARK BROWN
T-SHIRT SIZE S M L XL XXL

NAME _____ PHONE () _____

DEPARTMENT _____ MEASURED BY _____ AAA POLICE SUPPLY